



Paints for OFFSHORE STRUCTURES

Since our establishment in 1917, we have made various kinds of products for vessels and marine structures and have grown along with other industries around the world. Thanks to our innovative technology and accumulated experiences, our anti-corrosive and topcoat as well as antifouling paints have been highly praised by our valuable customers, world-widely. Offshore structures, one of our specific target, require long durable anti-corrosive performance more than 25 years to be free from undesirable rusting and keep the structure well without any color fading or discoloration.

Since Chugoku Marine Paints, Ltd. supplied our products for offshore projects of Jack-up Rig in 1958 in Japan, long lasting coating systems have been developed by our hand and now we shall introduce more advanced technology in taking consideration to meet with the latest demands of environmental friendly and total cost saving with high quality.



Semi-Submersible Rig



**New Construction of FSO &
Conversion to FPSO**



Repair Works of Helideck & Brace



Drill Ship



**Outside Shell &
Exposed Areas**



Water Ballast Tank Coatings

CHUGOKU MARINE PAINTS, LTD.

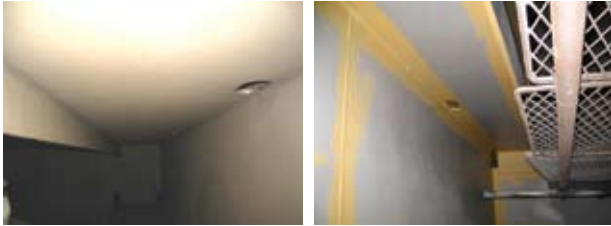
CMP Paints for OFFSHORE STRUCTURES

Painting specification

Water Ballast Tanks

Pure Epoxy

1st coat	NOVA 2000	160 μ	Stripe coat
2nd coat	NOVA 2000	160 μ	Stripe coat
		Total	320 μ



Outer Shell including Moonpool inside under water area

For inside: Up to 8.00m height from B.L.

BANNOH 500 AC	50 μ	
PERMAX 3000 S	450 μ	
BANNOH 500	100 μ	
CMP BIOCLEAN SG	100 μ	
CMP BIOCLEAN HB	200 μ	
Total		900 μ

For inside: Above 8.00m height from B.L.

BANNOH 500 AC	50 μ	
PERMAX 3000 S	450 μ	
Total		500 μ

Easy & Safety Maintenance

Maintenance for Water Ballast Tanks

Surface Tolerant Epoxy Non-Solvent

NOVA 5000 BARRIER

Easy maintenance by ship's crew and it is safety because of solvent free.

Surface Tolerant & Moisture Tolerant Modified Epoxy

UMEGUARD MT

In addition to surface tolerant function, the product can be applicable over dump surface.

Maintenance for Exposed Areas

Surface Tolerant Pure Epoxy

UMEGUARD SX

Easy maintenance by ship's crew. Can be applicable after rescale to ISO St.1.0 or above. Various kinds of finish coat is also applicable over the product within specified coating interval.

Surface Tolerant High Solid Modified Epoxy

UMEGUARD SX HS

For internal surface without any top coat such as Cofferdam or Void Spaces.

Approvals

Class approvals such as ABS, DNV, CLASS NK, Lloyd and so on for Solas, FDA, DOT and etc. (please refer to Approval List)

Approval from TOTAL GS EP COR 350, 351, 352 & 355

Technical Supervising

Chugoku's qualified inspectors with NACE or Frosio gives proper guidance for surface preparation, coating systems, application of paint all over the world.